

American Auto Trail Illinois Highway 50: A Nostalgic Journey Through Time

Get ready to embark on a captivating journey through time as we explore the rich history and scenic landscapes of Illinois Highway 50, a designated American Auto Trail. This legendary route, once a major artery for travelers and commerce, has been lovingly restored to its former glory, inviting you to rediscover the charm and wonder of the early 20th century.

From the bustling streets of East St. Louis to the tranquil shores of Lake Michigan, Illinois Highway 50 winds through a diverse tapestry of landscapes, quaint towns, and historic landmarks. Along the way, you'll encounter remnants of the past, such as vintage gas stations and roadside diners, that evoke a sense of nostalgia and romance.



American Auto Trail-Illinois' U.S. Highway 50 (American Auto Trails) by Lyn Wilkerson

★★★★☆ 4.3 out of 5

Language	: English
File size	: 1410 KB
Text-to-Speech	: Enabled
Screen Reader	: Supported
Enhanced typesetting	: Enabled
Word Wise	: Enabled
Print length	: 31 pages
Lending	: Enabled



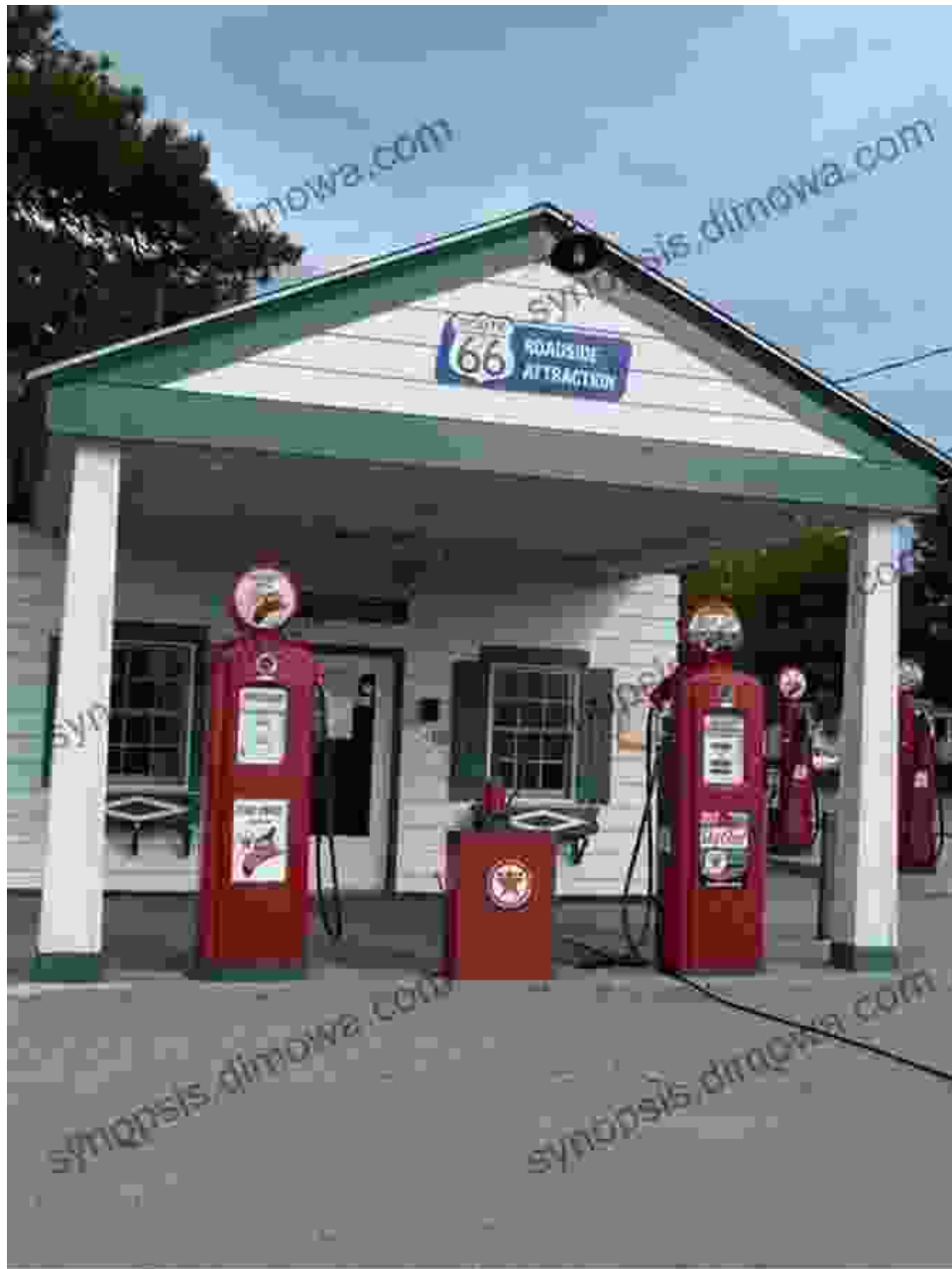
A Legacy of Innovation

The American Auto Trails were a network of long-distance roads that emerged in the early 1900s, connecting major cities and towns across the United States. These trails played a pivotal role in the development of the automobile industry and the rise of road trip culture.

Illinois Highway 50 was designated as an American Auto Trail in 1912, becoming part of a nationwide network of roads that spanned over 300,000 miles. This designation brought increased traffic and economic development to the communities along its route, fostering a sense of unity and pride.

Exploring Illinois Highway 50 Today

Today, Illinois Highway 50 offers a unique blend of historical charm and modern conveniences, making it an ideal destination for road trippers and history buffs alike. As you embark on this nostalgic journey, here are some of the highlights you can expect to encounter:

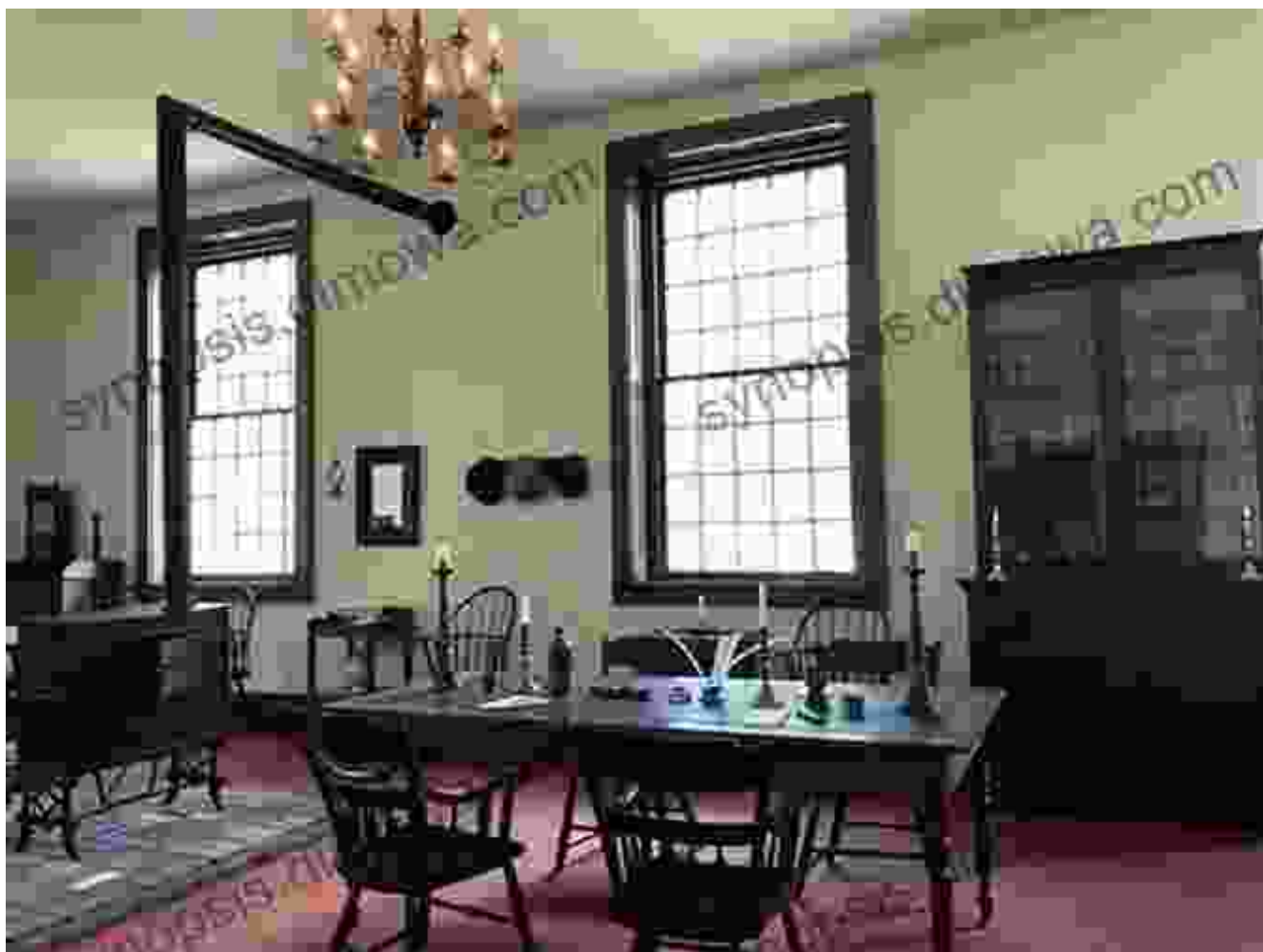


Remnants of the past, such as this vintage gas station, add to the nostalgic charm of Illinois Highway 50.

Charming Towns

Illinois Highway 50 passes through a multitude of charming towns, each with its own unique character and history. From the Victorian architecture of

Effingham to the quaint shops and galleries of Vandalia, there's something for everyone to discover.



The Vandalia Statehouse is a testament to the rich history of Illinois Highway 50.

Historical Landmarks

Illinois Highway 50 is dotted with historical landmarks that tell the story of the region's past. Visit the Cahokia Mounds State Historic Site, the largest prehistoric Native American settlement north of Mexico, or explore the Lincoln Home National Historic Site, where Abraham Lincoln lived for 17 years.



Uncover the ancient history of Illinois at the Cahokia Mounds State Historic Site.

Scenic Landscapes

Illinois Highway 50 traverses a variety of landscapes, from rolling hills and lush forests to the flatlands of the Midwest. Take a detour to explore the Shawnee National Forest, hike to the summit of Bald Knob, or enjoy a leisurely bike ride along the Mississippi River.



The Mississippi River offers breathtaking views and recreational opportunities along Illinois Highway 50.

Plan Your Journey

Ready to embark on your own nostalgic journey along Illinois Highway 50? Here are some tips for planning your adventure:

- **Choose your starting point:** Illinois Highway 50 begins in East St. Louis and ends in Chicago. You can start your journey at either end or pick a section to explore.
- **Plan your stops:** Research the towns and landmarks along the route to create an itinerary that aligns with your interests.

- **Book accommodations:** Several charming hotels and bed and breakfasts are located along Illinois Highway 50.
- **Allow plenty of time:** The full length of Illinois Highway 50 is over 300 miles. Allow yourself ample time to explore the sights and enjoy the journey.
- **Bring your camera:** The scenic landscapes and historical landmarks along Illinois Highway 50 are perfect for capturing memories.

American Auto Trails

- Lincoln Highway
- Dixie Highway
- National Old Trails Road
- Ocean-to-Ocean Highway
- Bankhead Highway

Illinois Highway 50 is more than just a road; it's a living testament to the rich history and diverse landscapes of Illinois. Whether you're a history buff



American Auto Trail-Illinois' U.S. Highway 50 (American Auto Trails) by Lyn Wilkerson

★★★★☆ 4.3 out of 5

Language : English
 File size : 1410 KB
 Text-to-Speech : Enabled
 Screen Reader : Supported
 Enhanced typesetting : Enabled
 Word Wise : Enabled
 Print length : 31 pages
 Lending : Enabled

FREE

DOWNLOAD E-BOOK



Mastering Project Management: The Ultimate Guide to Success with Deepak Pandey's Project Manager Pocket Guide

In today's competitive business landscape, effective project management has become an indispensable skill for organizations striving for success. With the...



Let's Build Sue Fliess: Unleash the Polychrome Master Within

Chapter 1: The Art of Polychrome Sculpting In this introductory chapter, we delve into the captivating history of polychrome sculpture,...